

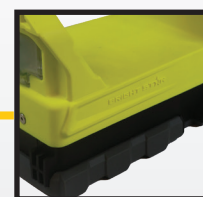
RAPTOR SPOT RECHARGEABLE LANTERN

Super-Lightweight, Full-Size, Long Range Rechargeable Lantern

The Raptor spot is an ultra-long range intrinsically safe spotlight producing an industry leading 135,000 candela beam intensity and 735-meter beam distance. An electronic focus feature allows selection between 3 modes: long range spot, medium range spot and hybrid spot-flood modes. Cycling through these modes will allow users to select a beam pattern that best suits their needs for a spotlight, with the option to add more peripheral light to the output of the product. A 4-level battery indicator provides real time battery charge status during use and during recharging. The Class I Div 1 / ATEX / IECEx ratings make this product suitable for most hazardous environments globally.



Articulating Head



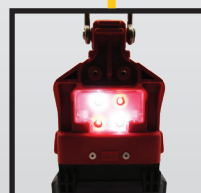
Super Tough Nylon Construction



Peak of 135,000 Candela



Battery Level Indicator



Rear Signaling Tail Light

Features

- 3 light profile Mode: Long range spotlight, Medium range Spotlight & Hybrid spot-flood mode
- Selectable light profile modes to maximize beam distance or peripheral light
- Battery level indicator
- Steady-on/ flashing modes and rear signaling taillight
- Lumens vary in modes. Spot mode is 325, Hybrid spot-flood mode is 375

Safety Approvals

Class I Div 1 Groups C-D T4
Ex ia op is IIB T4
ATEX/IECEx Zone 0

Long Range Spot Mode

High

Low

FL 1 STANDARD		FL 1 STANDARD	
325 LUMENS	9h	180 LUMENS	17.5h
135,000cd	1m	77,000cd	1m
735m	1m	555m	1m

Medium Range Spot Mode

High

Low

FL 1 STANDARD		FL 1 STANDARD	
325 LUMENS	10h	180 LUMENS	17h
102,500cd	1m	58,000cd	1m
640m	1m	482m	1m

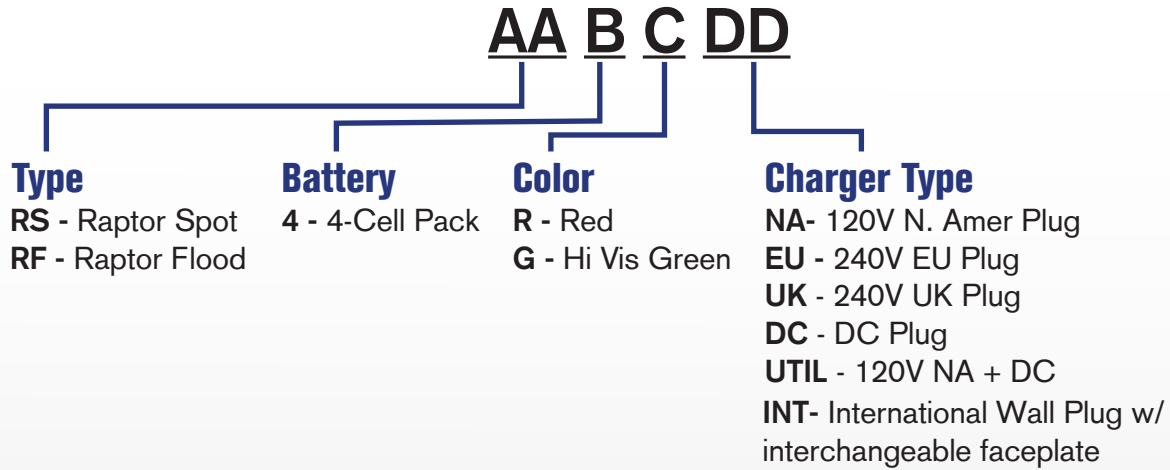
Hybrid Spot/Flood Mode

High

Low

FL 1 STANDARD		FL 1 STANDARD	
375 LUMENS	11h	215 LUMENS	18h
71,000cd	1m	43,000cd	1m
533m	1m	415m	1m

ITEM NUMBER CODE



Example:

Lighthawk Raptor Spot, 4 cell, Red, 120VAC charger, **Item#: RS4RNA**

Accessories

- #9B-2543: Strap, Plastic Buckle
- #9B-2569: Strap, Seat Belt Buckle
- #20627: 240V UK AC/DC Wall Adapter
- #20628: 120V AC/DC Wall Adapter
- #20629: 220V EU AC/DC Wall Adapter
- #20638: 12V DC Plug
- #07690: Charger Base
- #10B-2544: Dual Magnet Kit
- #9B-1962-4: 4 Cell, 6400mAh replacement battery

Specifications

- Power Source:** Lithium Ion Battery
- Light Source:** Advanced LED Technology
- Light Output:** 375lm (high) / 180lm (low)
- Peak Beam Intensity:** 135,000cd (high) / 43,000cd (low)
- Beam Distance:** High: 735m (2,411 feet) / Low: 415m (1,361 feet)
- Run Time:** 9-18 hours
- Ingress Protection:** Waterproof 1 Meter IPX7
- Weight:** 2.2 lbs
- Length:** 10 in. **Width:** 4 in. **Height:** 5.5 in.
- Color:** Red or Hi Vis Green

Accessories



Included in Box: Raptor Rechargeable Lantern, Charger, Plastic Buckle Strap-